



aperta®

## KEYPAD DOOR ENTRY BROCHURE

**ESP**  
• • • • • ScolmoreGROUP

[www.espuuk.com](http://www.espuuk.com)







# aperta®

Access control is the term given to controlling who has access to a premises.

Typically access control covers applications where there are considerations for a number of individuals, whether this be staff members or visitors who require access to a building. Management of access is required for multiple reasons, of which the main reason is security, therefore peace of mind. Examples of these sites include; offices, warehouses, leisure facilities, education and health centres etc.

To assist with access control requirements, specialised equipment in the form of door access systems have been developed in order to manage this effectively instead of relying on staff members or security personnel.

ESP offer a range of handy kits that are supplied with the components of a door access system to suit the majority of applications.

The most popular kit contains; EZTAG3 Keypad, System power supply with optional back-up battery facility, magnetic lock, emergency break glass and choice of exit button or mushroom button.

In addition, the components are available separately for specialist applications. The accessories in the range include; IP67 rated Magnetic lock, IP55 mushroom button, yale release mechanism, additional entry tags and SLA batteries for power backup facility.

Even though ESP are confident of the simplicity of the product, ESP's technical support team are on-hand Monday-Friday for any advice and support required.

ESP's door access range 'Aperta' also consists of video and audio systems to combine with access control requirements.



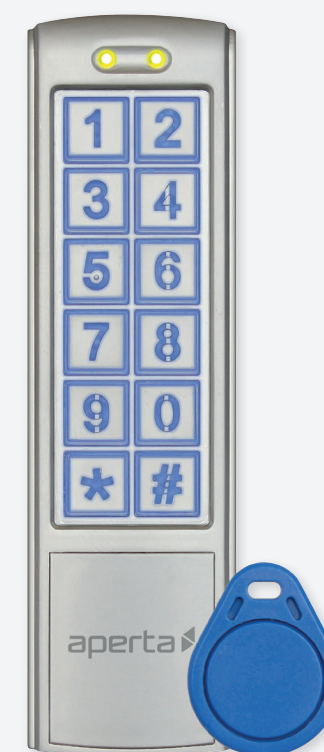


### EZTAG3

#### Proximity and Keypad Door Entry

- Easy install, simple self-contained programming
- Up to 1,010 key tag holders or Pin numbers
- 2 separate user groups
- 2 relay outputs
- Anti tamper option
- Weather/dust proof robust construction IP65
- Complete with 10 tags

**EZT3ST10** Additional Proximity Tags (10 Pack)

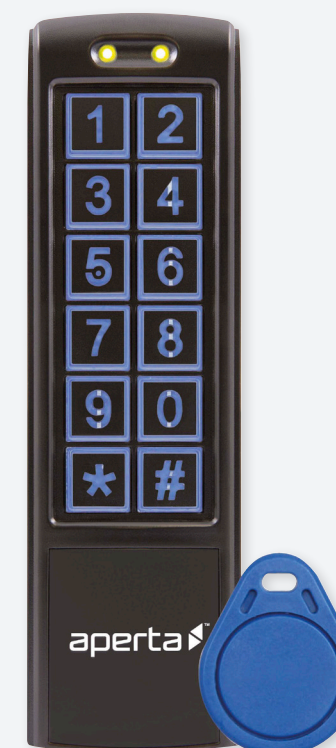


### EZTAG3B

#### Proximity and Keypad Door Entry

- Easy install, simple self-contained programming
- Up to 1,010 key tag holders or Pin numbers
- 2 separate user groups
- 2 relay outputs
- Anti tamper option
- Weather/dust proof robust construction IP65
- Complete with 10 tags

**EZT3ST10** Additional Proximity Tags (10 Pack)





## EZTAG3PROB

### Proximity and Keypad Door Entry Kit

- Complete entry system in one box comprising of:
- EZ-TAG3B Proximity Door Entry Keypad
- EZT3ST10 Proximity Tags
- EVML-250 Electromagnetic Lock
- EVBPSBB Boxed Power Supply
- EV-EXIT Push to Exit Button
- EV-EBG Emergency Break Glass

## EZTAG3PRO

### Proximity and Keypad Door Entry Kit

- Complete entry system in one box comprising of:
- EZ-TAG3 Proximity Door Entry Keypad
- EZT3ST10 Proximity Tags
- EVML-250 Electromagnetic Lock
- EVBPSBB Boxed Power Supply
- EV-EXIT Push to Exit Button
- EV-EBG Emergency Break Glass



## EZTAG3PROMB

### Proximity and Keypad Door Entry Kit

- Complete entry system in one box comprising of:
- EZ-TAG3B Proximity Door Entry Keypad
- EZT3ST10 Proximity Tags
- EVML-250 Electromagnetic Lock
- EVBPSBB Boxed Power Supply
- EVEXITM Push to Exit Mushroom Button
- EV-EBG Emergency Break Glass

## EZTAG3PROM

### Proximity and Keypad Door Entry Kit

- Complete entry system in one box comprising of:
- EZ-TAG3 Proximity Door Entry Keypad
- EZT3ST10 Proximity Tags
- EVML-250 Electromagnetic Lock
- EVBPSBB Boxed Power Supply
- EVEXITM Push to Exit Mushroom Button
- EV-EBG Emergency Break Glass







### EV-EXIT

Push to Exit Release Button

- Stainless steel fascia
- Flush mounting
- Push to make contacts

### EV-EBG

Emergency Break Glass

- Surface mounted
- Emergency break glass to release door



### EVEXITM

Push to Exit Mushroom Release Button

- Large mushroom exit button
- Normally open & closed contacts
- Clear wording
- Stainless steel fascia (Surface mount box part code: UDTASMBSS)
- 87.5 x 87.5 x 35mm
- 173g

### EV4EBG-CVR

Break Glass Cover for EV-EBG



### EVEXITMIP55

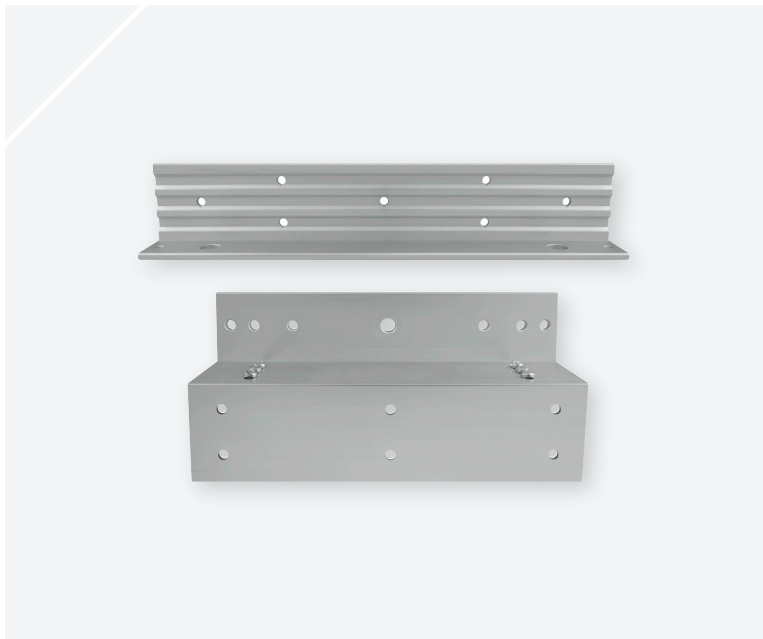
Push to Exit Mushroom Release Button IP55

- Large mushroom exit button
- IP55 Ingress protection
- Normally open & closed contacts
- Clear wording
- Robust housing (Includes surface mount box)
- 85m x 80mm x 85mm
- 200g

### EV-EBG-KEY

Pack of 5 keys for EV-EBG





### EV-ML-250ZLB

#### Electromagnetic Lock

- Spare Z and L bracket for EV-ML-250

### EVBPSBB

#### Boxed Power Supply

- 100-240vAC, 50/60Hz input
- 1.5A / 12vDC fail safe/secure output
- 1A 12vDC output
- Backup battery facility (Requires Battery)
- Size: 129 x 73 x 50mm LWD



### EV-ML-500XT

#### Electromagnetic Lock

- IP67 rated weather resistant external lock
- Holding force 500kg/1200lbs max
- Z & L mounting bracket included
- Dual voltage 12 & 24 VDC
- Fail safe
- Dimensions excl. bracket - 220 x 42 x 62mm
- Requires EVBPSBB power supply

### BAT7

#### 12V - 7.0ah SLA Battery

- Back up battery for EVBPSBB



### EV-ML-250

#### Electromagnetic Lock

- Holding force 250kg/550lbs max
- Z & L mounting bracket included
- Dual voltage 12 & 24 VDC
- Fail safe
- Dimensions excl. bracket - 250 x 26 x 41mm
- Requires EVBPSBB power supply

### EZT3ST10

#### Additional Proximity Tags (10 Pack)





**Elite Security Products**  
Unit 7, Target Park,  
Shawbank Road, Lakeside,  
Redditch B98 8YN  
**Tel:** +44 (0) 1527 51 51 50  
**Fax:** +44 (0) 1527 51 51 43  
**info@espuk.com**  
**www.espuk.com**

**Elite Security Products Ireland**  
Unit 1B, Three Rock Road,  
Sandyford Industrial Estate,  
Dublin, Ireland  
**Tel:** +353 (1) 5577 290  
**Fax:** +353 (1) 2811 224  
**sales@espi.ie**  
**www.espi.ie**

**Scolmore Dubai**  
Lake Central Tower,  
Office 1803, Business Bay,  
Dubai, UAE  
**UAE Office:** +971 4589 6552  
**Mob:** +971 52 451 1164  
**sales@scolmoredubai.com**  
**www.scolmoredubai.com**

E&OE - Errors and  
omissions excepted.